



Noise Monitoring Result

Day Time (0700 - 1900hrs on normal weekdays)

Location: M1a - Harbour Road Sports Centre

Date	Time	Weather	Measurement Noise Level			Baseline Level	Construction Noise Level	Limit Level
			Leq	L10	L90	Leq	Leq	Leq
Unit: dB(A), (30-min)								
1/2/2017	13:00	Fine	69.0	72.5	67.5	72	69	75
9/2/2017	10:00	Fine	75.8	77.0	71.5	72	73	75
16/2/2017	09:50	Fine	76.8	80.0	71.5	72	75	75
21/2/2017	15:09	Cloudy	73.5	75.5	69.0	72	68	75

Location: M2b - Noon-day gun area

Date	Time	Weather	Measurement Noise Level			Baseline Level	Construction Noise Level	Limit Level
			Leq	L10	L90	Leq	Leq	Leq
Unit: dB(A), (30-min)								
1/2/2017	13:50	Fine	66.9	67.5	63.5	68	67	75
9/2/2017	10:45	Fine	67.7	69.0	65.5	68	51	75
15/2/2017	09:51	Fine	67.5	69.0	65.5	68	68	75
21/2/2017	14:20	Cloudy	67.1	68.5	65.0	68	67	75

Location: M3a - Tung Lo Wan Fire Station

Date	Time	Weather	Measurement Noise Level			Baseline Level	Construction Noise Level	Limit Level
			Leq	L10	L90	Leq	Leq	Leq
Unit: dB(A), (30-min)								
1/2/2017	14:30	Fine	64.9	66.5	62.0	69	65	75
9/2/2017	11:25	Fine	66.3	67.0	64.5	69	66	75
16/2/2017	10:31	Fine	64.5	66.0	62.5	69	65	75
21/2/2017	13:00	Cloudy	66.0	67.0	64.5	69	66	75

Location: M4b - Victoria Centre

Date	Time	Weather	Measurement Noise Level			Baseline Noise Level	Construction Noise Level	Limit Level
			Leq	L10	L90	Leq	Leq	Leq
Unit: dB(A), (30min)								
1/2/2017	15:10	Fine	63.4	64.5	60.5	67	63	75
9/2/2017	13:30	Fine	64.9	66.5	62.0	67	65	75
16/2/2017	11:08	Fine	66.8	68.5	64.5	67	67	75
21/2/2017	13:37	Cloudy	64.7	66.0	62.0	67	65	75

Location: M5b - City Garden

Date	Time	Weather	Measurement Noise Level			Baseline Level	Construction Noise Level	Limit Level
			Leq	L10	L90	Leq	Leq	Leq
Unit: dB(A), (30min)								
1/2/2017	15:50	Fine	65.8	67.5	62.5	68	66	75
7/2/2017	08:05	Fine	68.0	69.5	67.0	68	68	75
15/2/2017	10:55	Fine	67.1	68.5	65.0	68	67	75
21/2/2017	10:20	Cloudy	71.0	74.0	70.2	68	68	75

Location: M6 - HK Baptist Church Henrietta Secondary School

Date	Time	Weather	Measurement Noise Level			Baseline Level	Construction Noise Level	Limit Level
			Leq	L10	L90	Leq	Leq	Leq
Unit: dB(A), (30-min)								
1/2/2017	16:26	Fine	67.1	68.5	65.0	71	67	70
7/2/2017	08:45	Fine	68.5	69.0	67.5	71	69	65
13/2/2017	10:55	Fine	68.4	69.5	66.5	71	68	65
21/2/2017	10:57	Cloudy	68.5	69.0	66.5	71	69	65



Noise Monitoring Result

Day Time (0700 - 1900hrs on normal weekdays)

Location: M7e - International Finance Centre (Eastern End of Podium) (Reference Station)

Date	Time	Weather	Measurement Noise Level			Baseline Level	Construction Noise Level	Limit Level
			Leq	L10	L90	Leq	Leq	Leq
Unit: dB(A), (30-min)								
2/2/2017	08:30	Fine	66.0	67.0	64.5	67	66	N/A
8/2/2017	08:30	Fine	68.0	69.0	66.5	67	62	N/A
17/2/2017	09:44	Fine	66.8	68.5	62.5	67	67	N/A
20/2/2017	08:30	Fine	66.5	68.5	65.0	67	67	N/A

Location: M7w - International Finance Centre (Western End of Podium)

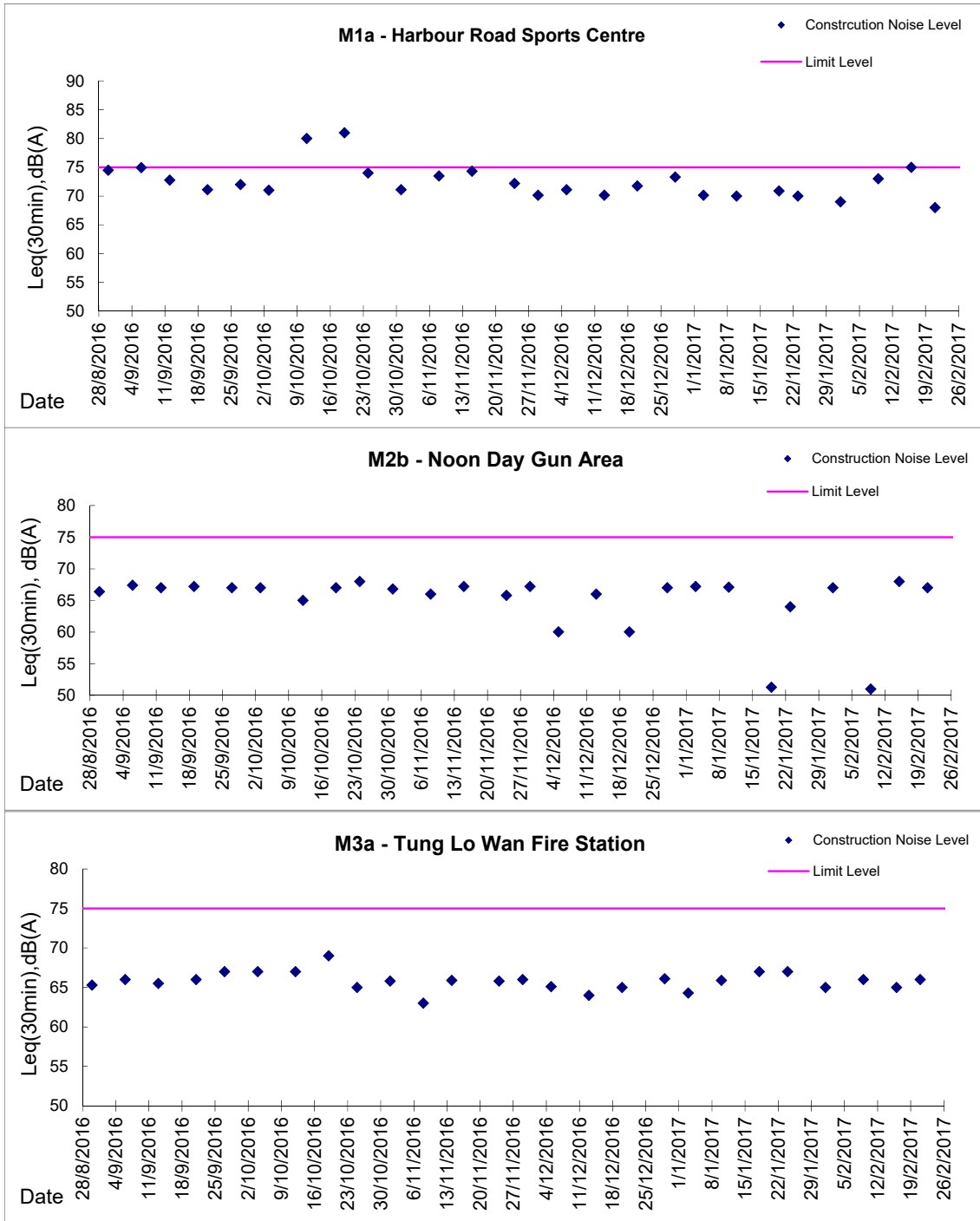
Date	Time	Weather	Measurement Noise Level			Baseline Level	Construction Noise Level	Limit Level
			Leq	L10	L90	Leq	Leq	Leq
Unit: dB(A), (30-min)								
2/2/2017	09:35	Fine	65.0	66.0	63.0	69	65	75
8/2/2017	09:35	Fine	66.0	67.0	65.0	69	66	75
17/2/2017	10:19	Fine	66.8	68.5	63.0	69	67	75
20/2/2017	09:30	Fine	65.5	68.0	64.5	69	66	75

Location: M8 - City Hall

Date	Time	Weather	Measurement Noise Level			Baseline Level	Construction Noise Level	Limit Level
			Leq	L10	L90	Leq	Leq	Leq
Unit: dB(A), (30-min)								
2/2/2017	10:35	Fine	68.0	69.5	67.5	64	66	70
8/2/2017	10:35	Fine	69.0	70.0	67.5	64	67	70
17/2/2017	11:00	Fine	64.8	65.7	56.0	64	57	70
20/2/2017	10:30	Fine	64.5	65.0	63.0	64	55	70

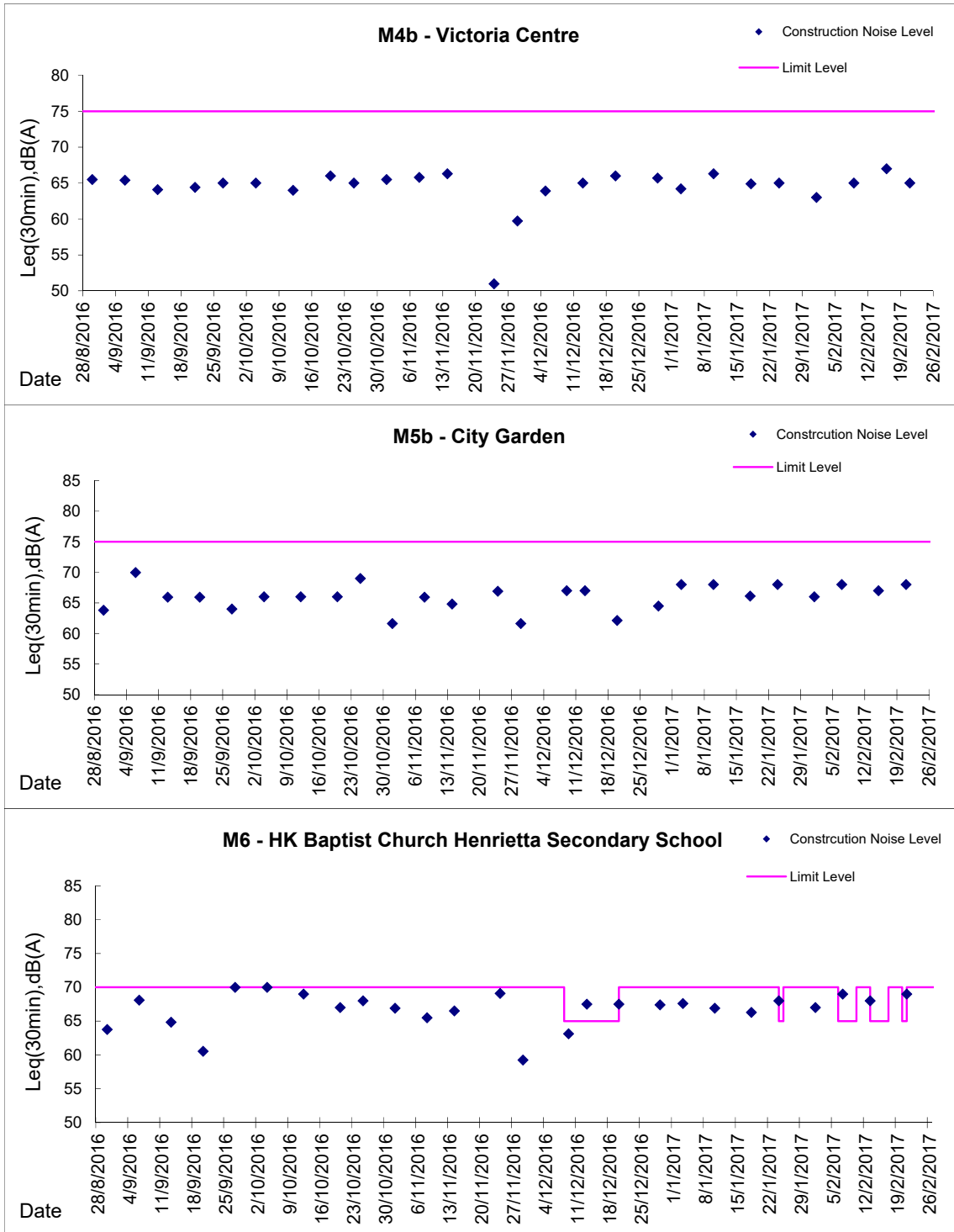
Graphic Presentation of Noise Monitoring Result

Day Time (0700 - 1900hrs on normal weekdays)



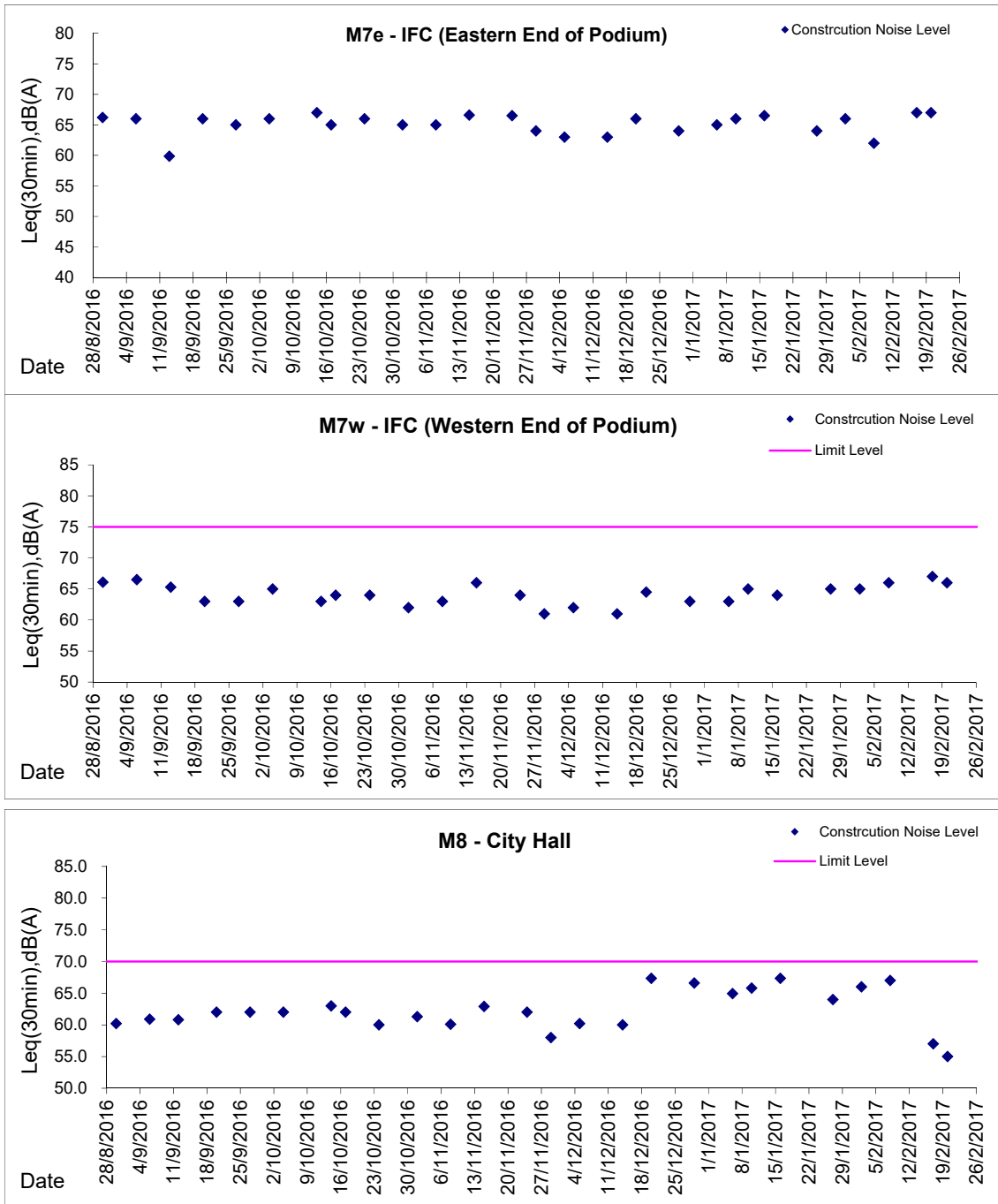
Graphic Presentation of Noise Monitoring Result

Day Time (0700 - 1900hrs on normal weekdays)



Graphic Presentation of Noise Monitoring Result

Day Time (0700 - 1900hrs on normal weekdays)



* Remark: M7e - IFC (Eastern End of Podium) is a reference monitoring station